



# UNIVERSITY NORTH PARK

## MASTER PLAN UPDATE

MARCH 19, 2018

# WELCOME TO UNIVERSITY NORTH PARK

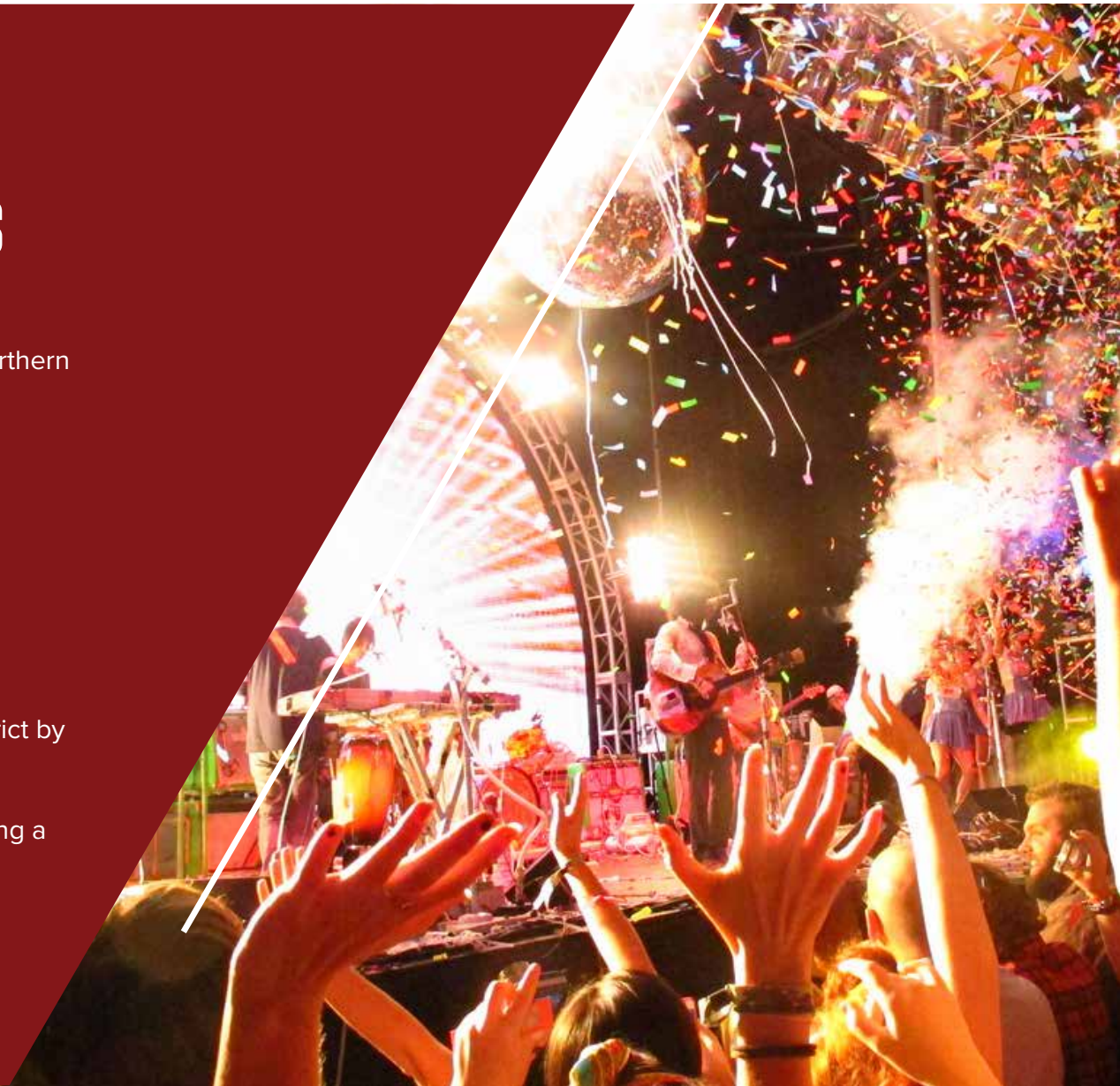
University North Park is being enhanced with a Town Center within the thriving retail south of Rock Creek Road, and expanded with an entertainment / mixed-use development to the north. The result will be a dynamic regional destination in the City of Norman. Upon completion, this new hub of energy will welcome residents, visitors and fans with the perfect combination of amenities – a vibrant tenant mix, broad array of local and national dining options, exciting entertainment venues, connecting bike trails and an inviting, invigorating ambiance enlivened by the existing Legacy Park as well as a new events plaza in the new Entertainment District. This masterplan illustrates the long range development potential for the entire 500+ acres and its two miles of I-35 frontage.

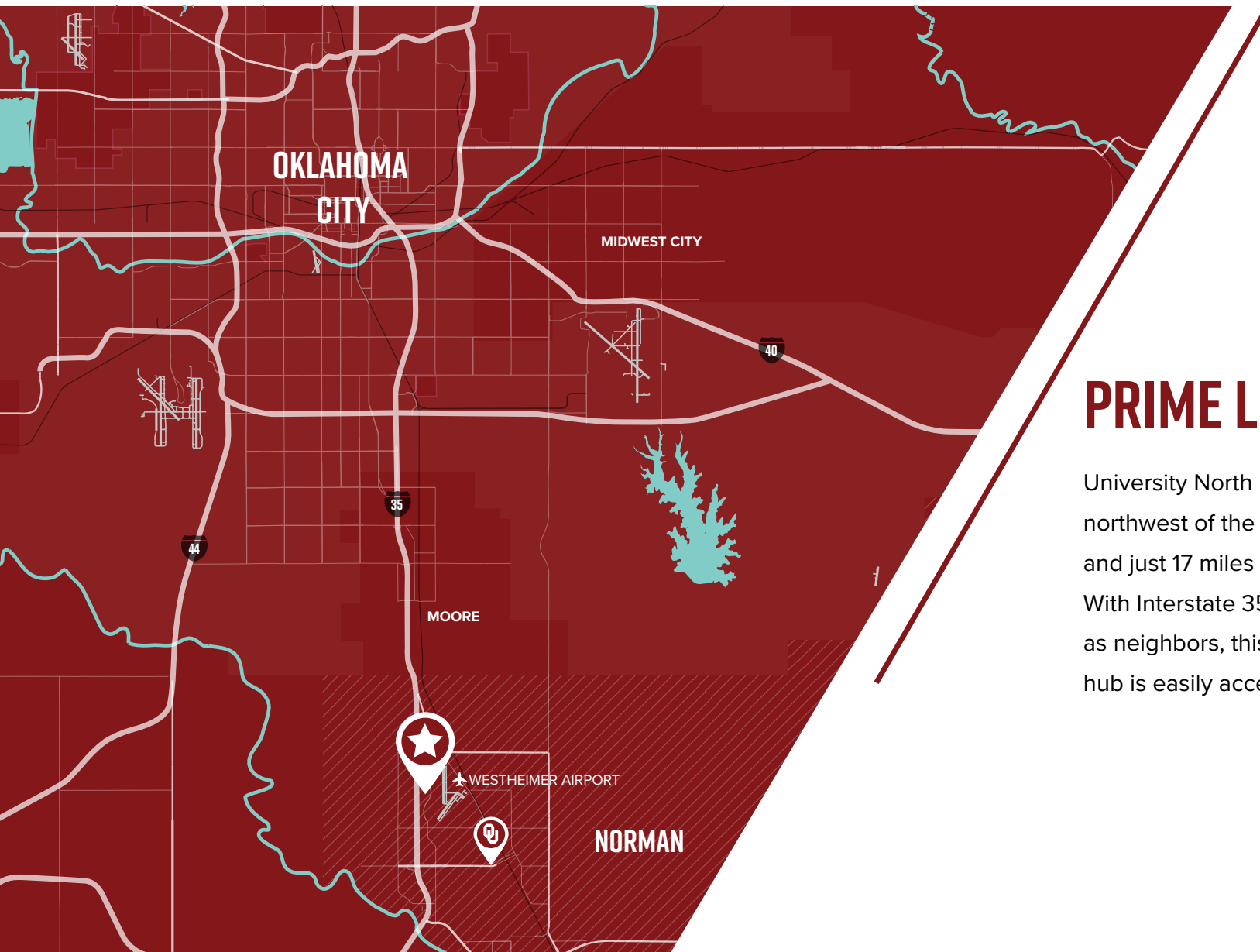




# MASTERPLAN DESIGN GOALS

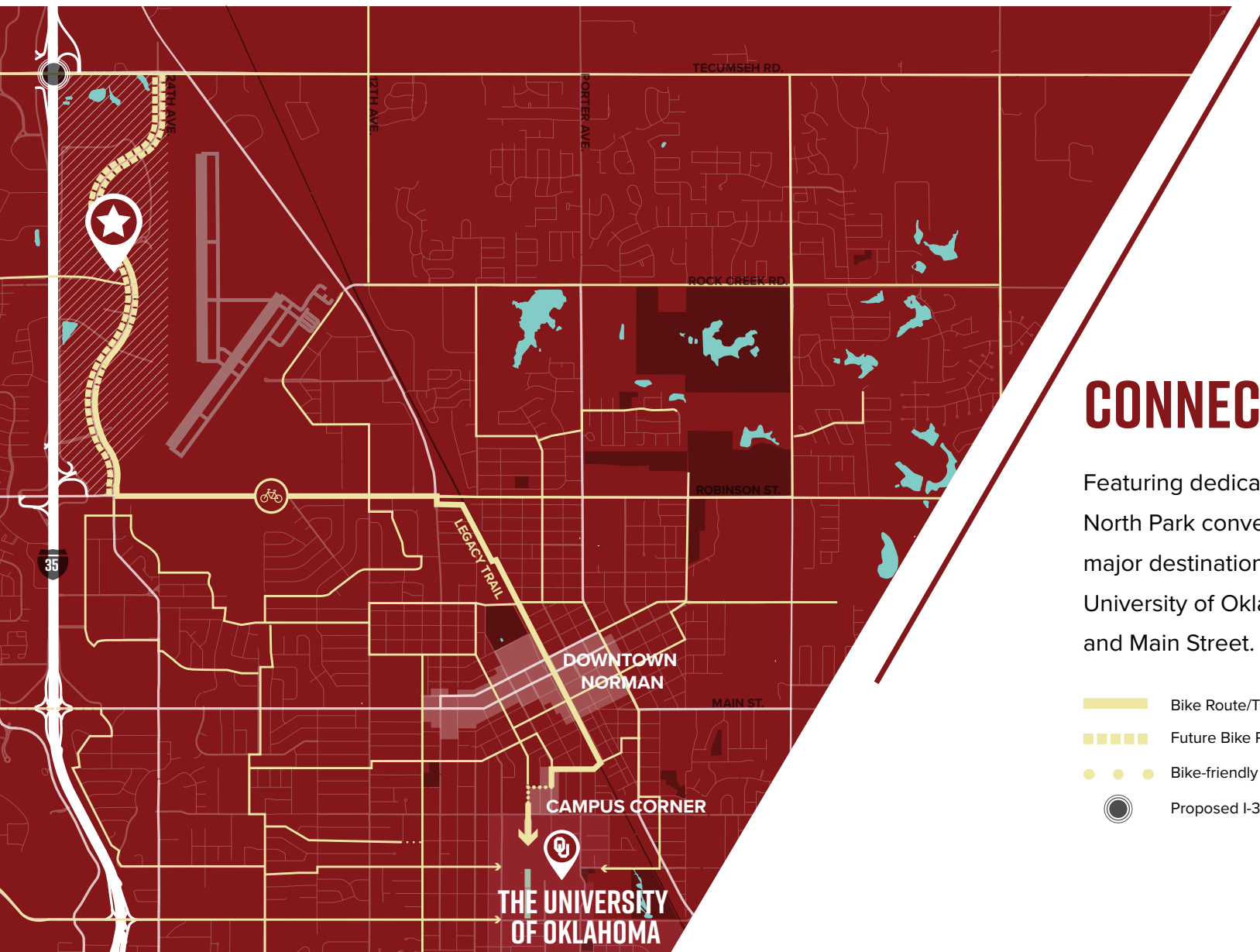
- 1 / Create a development strategy that utilizes remaining southern parcels and creates long-term strategy for northern parcels
- 2 / Improve connectivity within the district and regionally
- 3 / Use undeveloped land in southern parcel to enhance adjacency and connectivity to legacy park
- 4 / Create a mixed-use entertainment destination on the northern parcel that creates a “heart” of the district
- 5 / Provide opportunities to increase residents within district by providing a range of housing options
- 6 / Increase employment base within the district by creating a variety of office locations and typologies





## PRIME LOCATION

University North Park is located just 6 miles northwest of the University of Oklahoma and just 17 miles south of Oklahoma City. With Interstate 35 and Westheimer Airport as neighbors, this exciting entertainment hub is easily accessible by all.



## CONNECTIVITY

Featuring dedicated bike lanes, University North Park conveniently connects with other major destinations in Norman, including the University of Oklahoma, Campus Corner and Main Street.

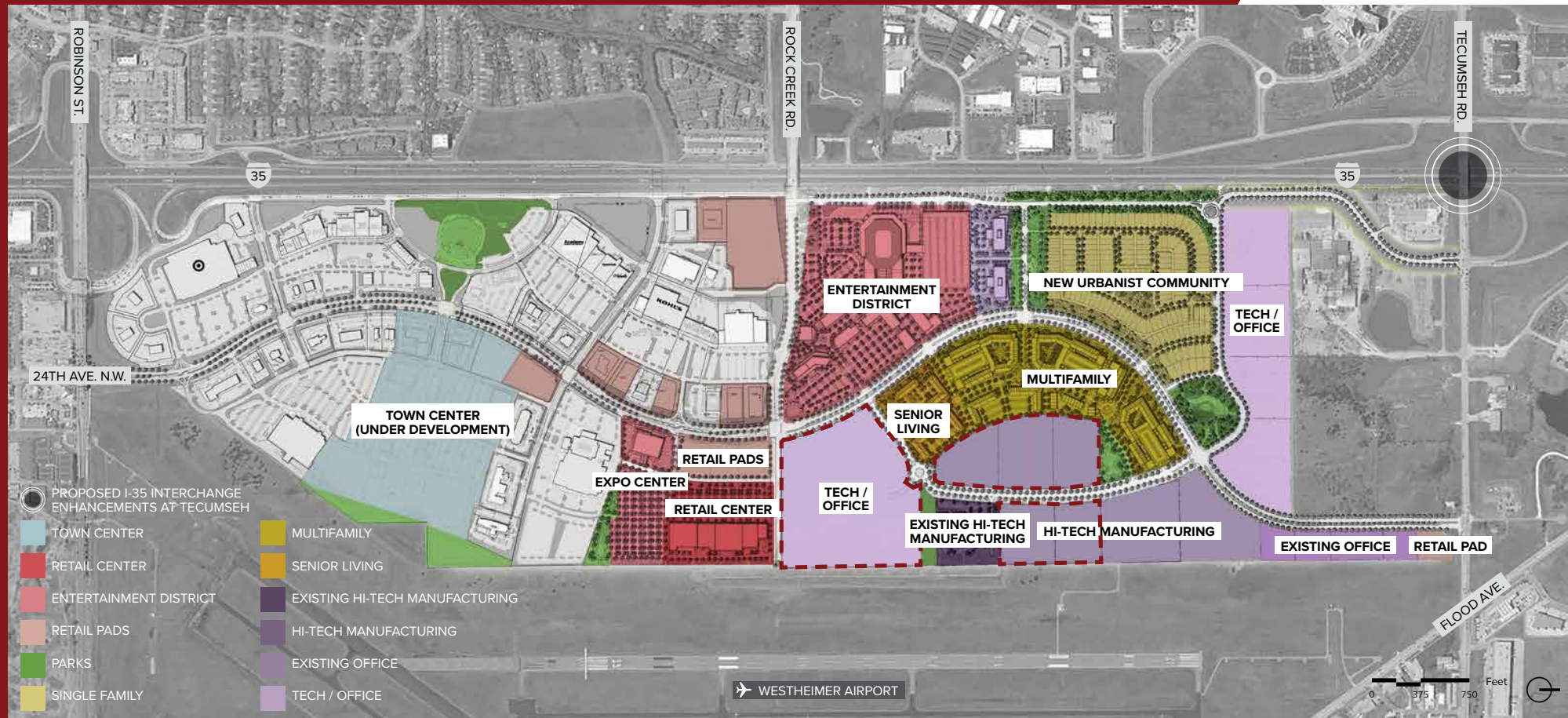
- Bike Route/Trail
- Future Bike Route/Trail
- Bike-friendly Road
- Proposed I-35 Interchange Enhancements at Tecumseh



# MASTERPLAN

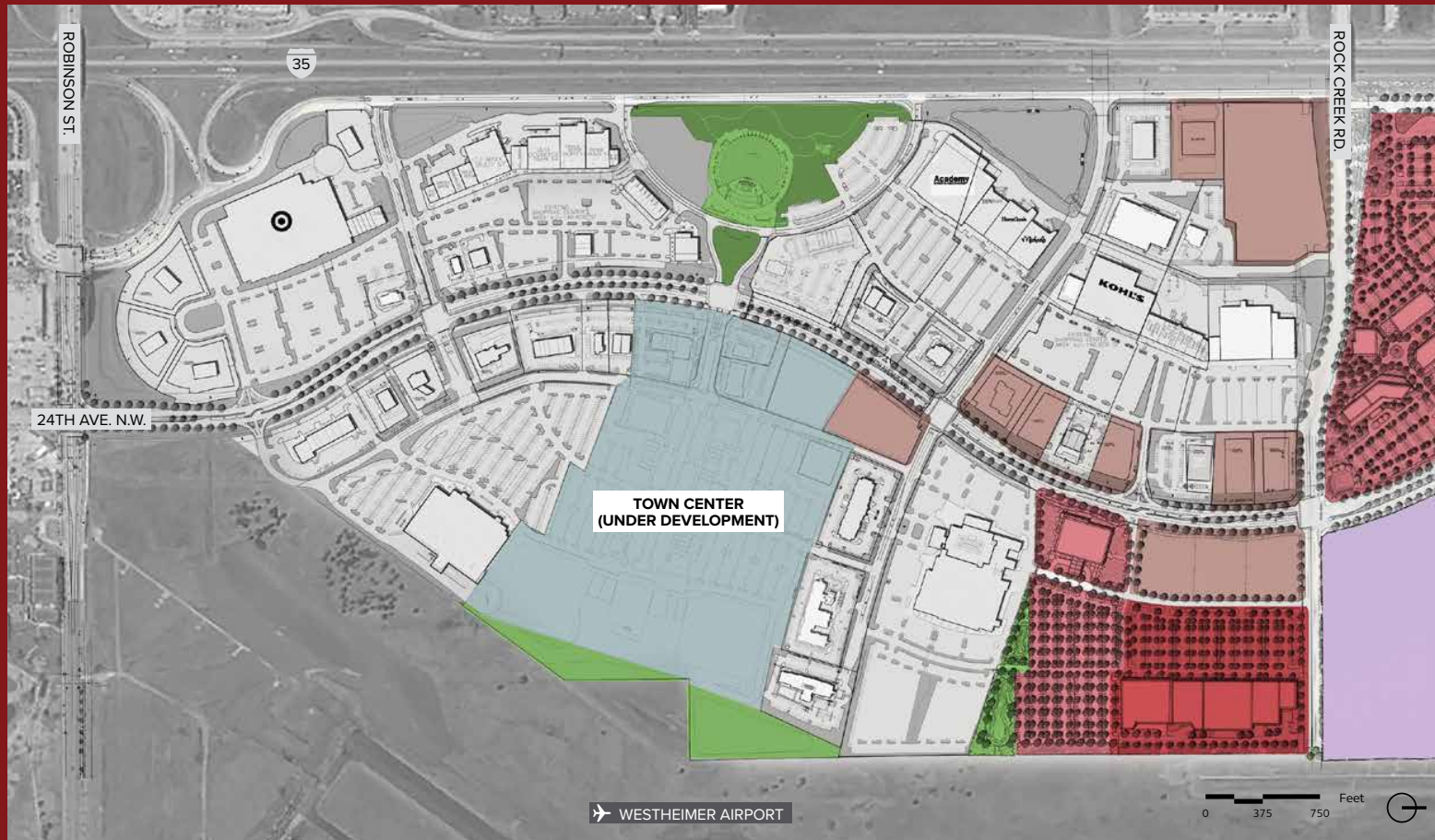


# LAND USE





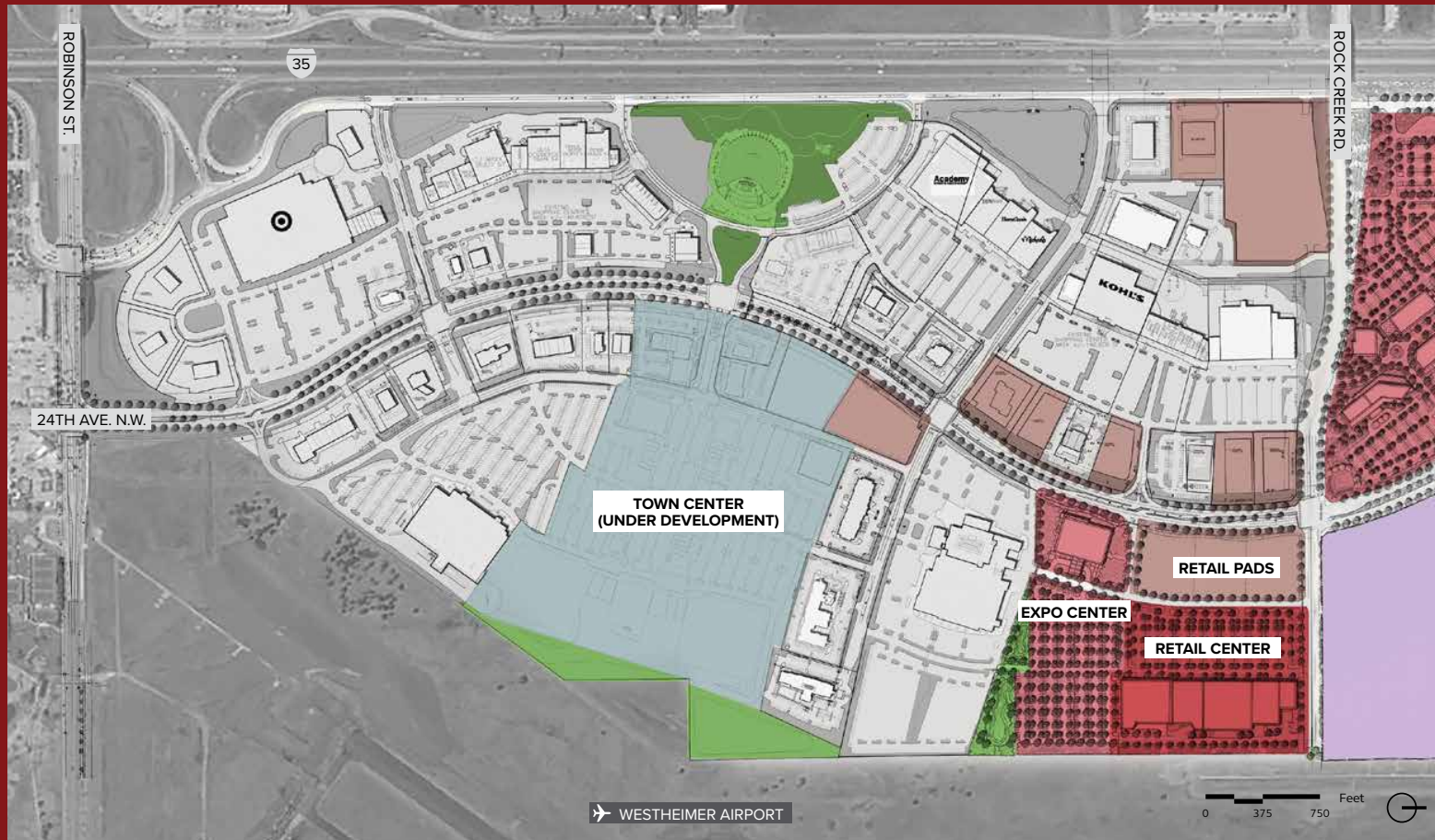
# MASTERPLAN: SOUTH



- 
**TOWN CENTER**  
 43 Acres  
 134.7K SF Retail / Restaurants
- 
**RETAIL CENTER**  
 13.2 Acres  
 125K SF Retail
- 
**RETAIL PADS**  
 20.0 Acres
- 
**EXPO CENTER**  
 10.6 Acres  
 40K SF Center

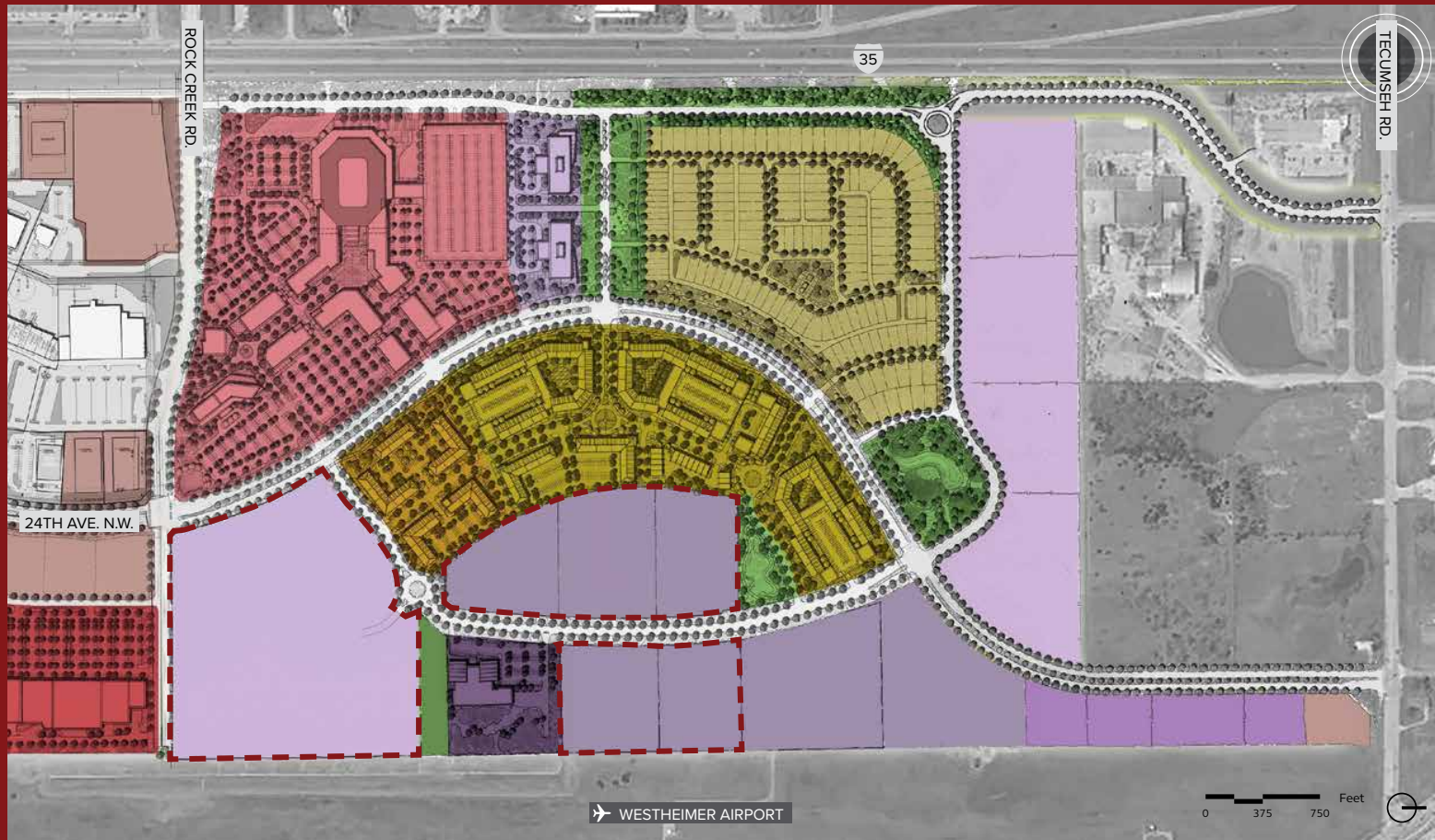


# LAND USE: SOUTH



- 
**TOWN CENTER**  
 43 Acres  
 134.7K SF Retail / Restaurants
- 
**RETAIL CENTER**  
 13.2 Acres  
 125K SF Retail
- 
**RETAIL PADS**  
 20.0 Acres
- 
**EXPO CENTER**  
 10.6 Acres  
 40K SF Center

# MASTERPLAN: NORTH



## ENTERTAINMENT

36.4 Acres  
100K SF Upper Level Office  
150K SF Entertainment / Restaurants  
225 Key Hotel



## NEW URBAN COMMUNITY

53.8 Acres  
283 Units



## MULTIFAMILY

28.6 Acres  
1,250 Units



## SENIOR LIVING

7.7 Acres  
200 Units



## HI-TECH MANUFACTURING

43.1 Acres  
375,500 SF



## TECH / OFFICE

59.5 Acres  
518,500 SF

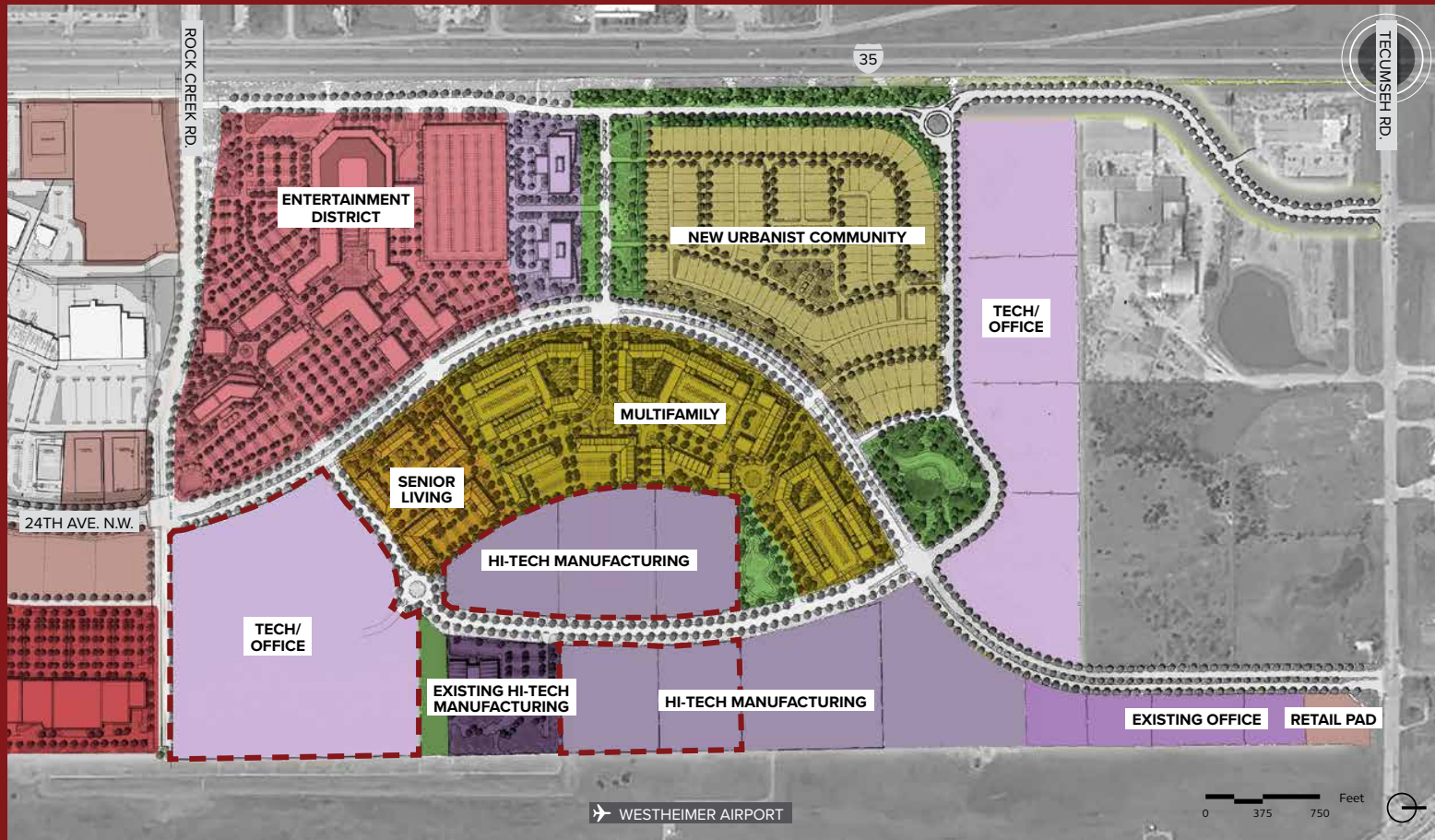









## PARKS

15 Acres



# LAND USE: NORTH



- 
**ENTERTAINMENT**  
 36.4 Acres  
 100K SF Upper Level Office  
 150K SF Entertainment / Restaurants  
 225 Key Hotel
- 
**NEW URBANIST COMMUNITY**  
 53.8 Acres  
 283 Units
- 
**MULTIFAMILY**  
 28.6 Acres  
 1,250 Units
- 
**SENIOR LIVING**  
 7.7 Acres  
 200 Units
- 
**HI-TECH MANUFACTURING**  
 43.1 Acres  
 375,500 SF
- 
**TECH / OFFICE**  
 59.5 Acres  
 518,500 SF
- 
**PARKS**  
 15 Acres

# THE VISION

## SOCIAL. SPIRITED. PROUD.

University North Park is a place for people who are ignited by the energy of the city. This vibrant destination will not only amplify and enhance the game day experience, but will also serve as the new nexus for spirit, dining and entertainment in Norman. Complementing the retail scene, University North Park will provide a combination of unique, local restaurants and national dining / entertainment options. Instilling pride and joy, it will provide space for game day events as well as state-of-the-art venues for international concerts and events. The Entertainment District is planned to serve as a walkable and comfortable neighborhood amenity for everyday use, as well as a flexible celebratory venue for pre- and post events on event day.





# RESIDENTIAL TYPOLOGIES

ADDISON CIRCLE - ADDISON, TX



STAPLETON, CO



CELEBRATION, FL



STAPLETON, CO



ADDISON CIRCLE - ADDISON, TX



# EXPO CENTER

BRISBANE CONVENTION & EXPOSITION CENTRE - BRISBANE, AUSTRALIA



DUKE ENERGY EXPO & CONVENTION CENTER - CINCINNATI, OH



KENTUCKY EXPOSITION CENTER - LOUISVILLE, KY



SHANGHAI NEW INTERNATIONAL EXPO CENTRE - SHANGHAI, CHINA

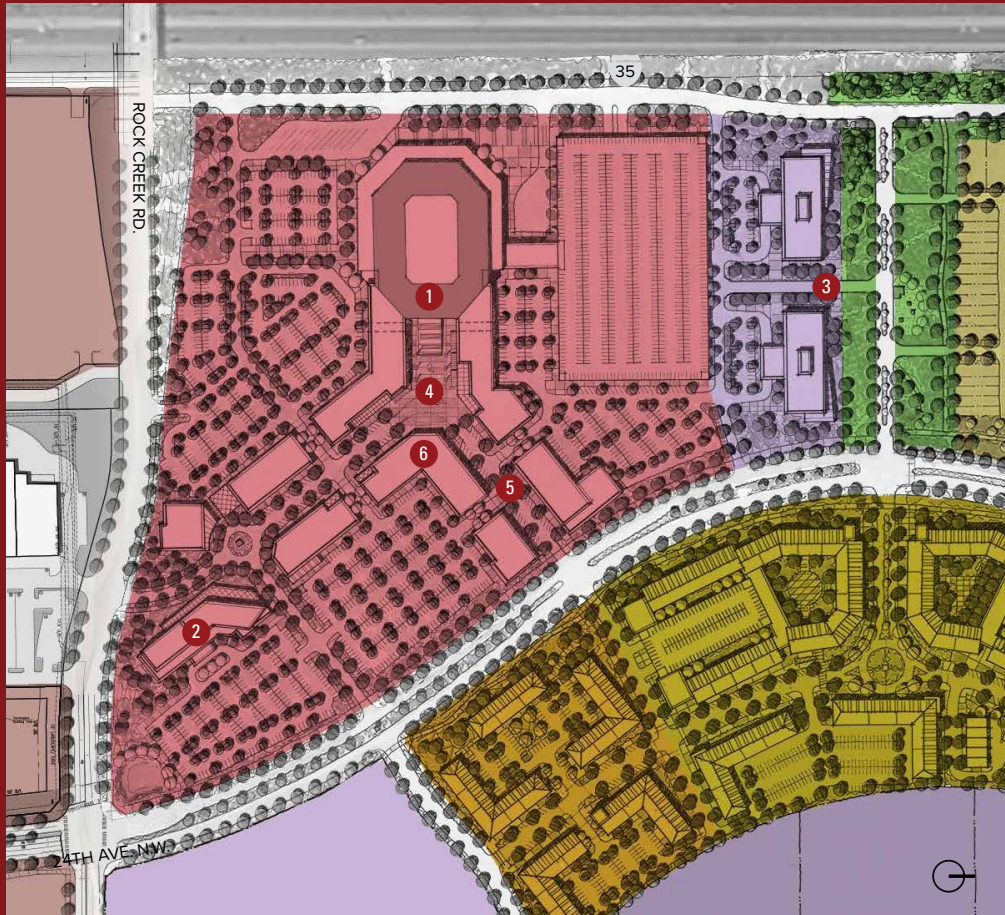


EXPO CENTER NORTE - SAO PAULO, BRAZIL





# LAND USE: NORTH



## 1 MULTI-PURPOSE ARENA

14.1 ACRES  
10,000 SEATS  
800 CLUB SEATS  
30 LOGE BOXES  
12 SUITES  
20 LUXURY SUITES  
2,600 PARKING GARAGE SPACES

## 2 HOTEL

5.2 ACRES  
225 KEYS

## 3 TECH / OFFICE

5.5 ACRES  
300K SF

## 4 EVENTS PLAZA

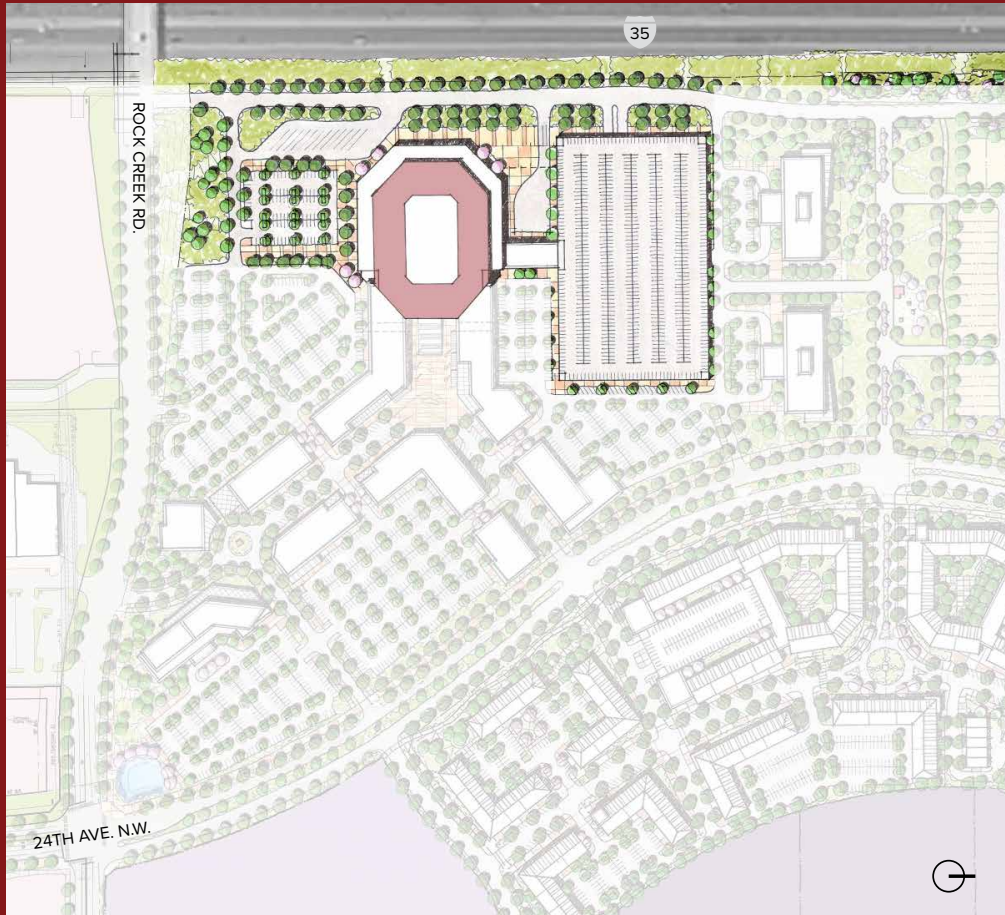
## 5 FESTIVAL STREET

## 6 MIXED-USE

20.1 ACRES  
150K SF Entertainment / Restaurant  
100K SF Upper Level Office



# ① NORTH: MULTI-PURPOSE ARENA



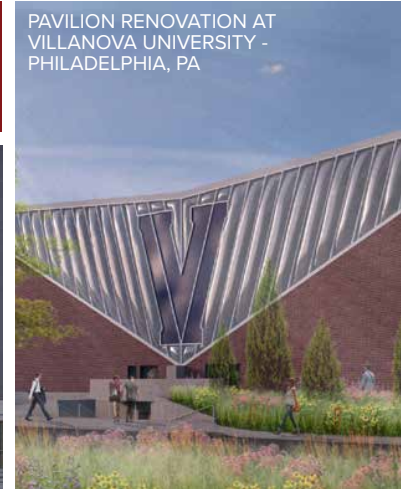
14.1 ACRES  
10,000 SEATS  
800 CLUB SEATS  
30 LOGE BOXES

12 SUITES  
20 LUXURY SUITES  
2,600 PARKING GARAGE SPACES

MCLEOD CENTER ARENA AT UNIVERSITY OF NORTHERN IOWA - CEDAR FALLS, IA



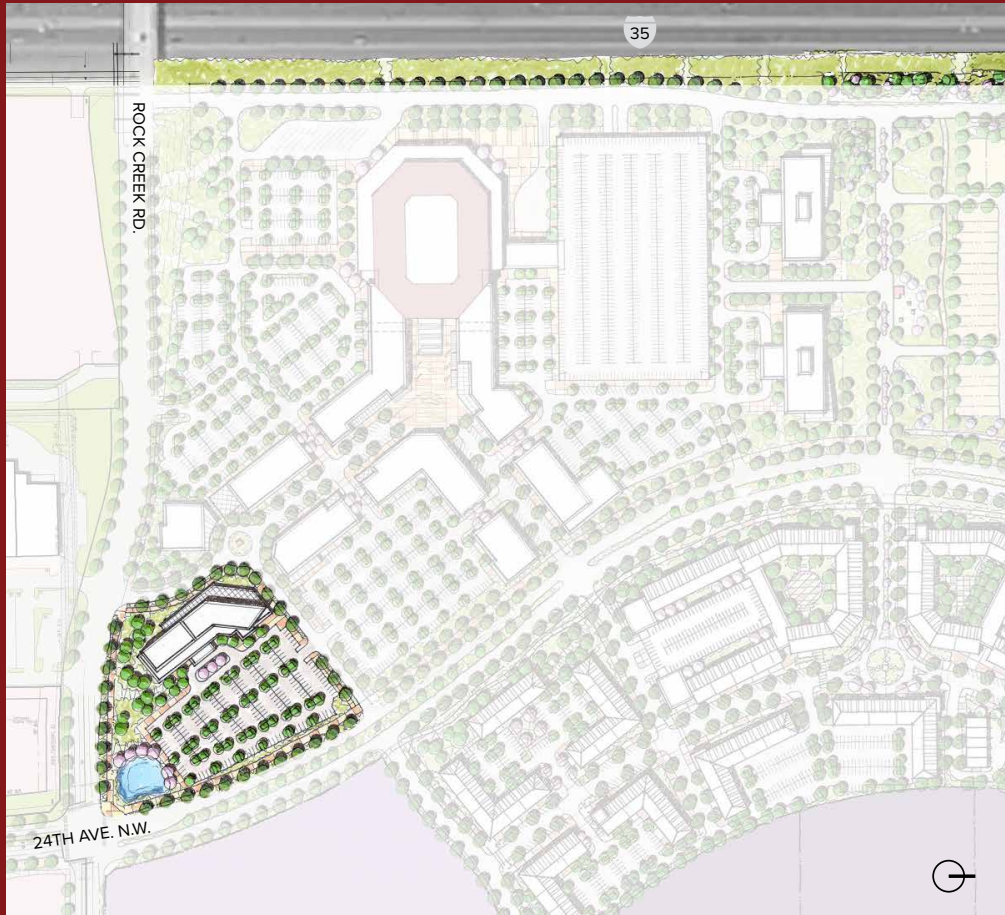
PAVILION RENOVATION AT VILLANOVA UNIVERSITY - PHILADELPHIA, PA



PURCELL PAVILION AT UNIVERSITY OF NOTRE DAME - SOUTH BEND, IN



## ② NORTH: HOTEL



5.2 ACRES  
225 KEYS



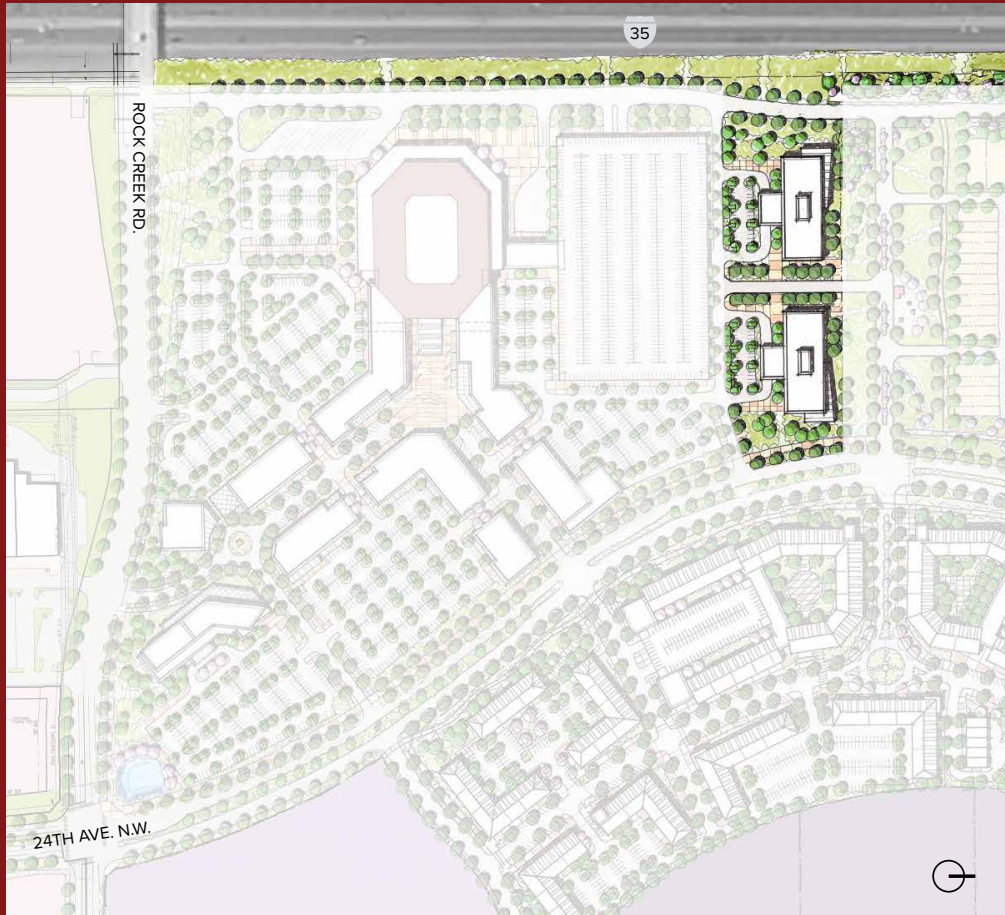
VIRGIN HOTEL - NASHVILLE, TN



THE STELLA - COLLEGE STATION, TX



### 3 NORTH: TECH / OFFICE



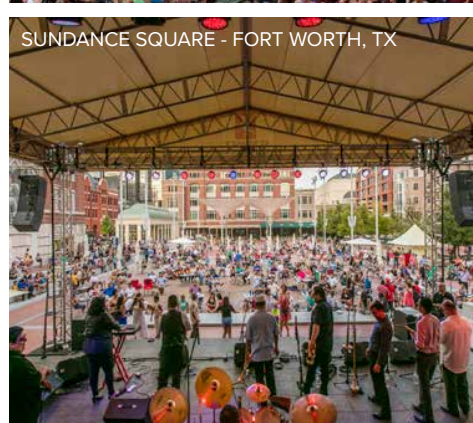
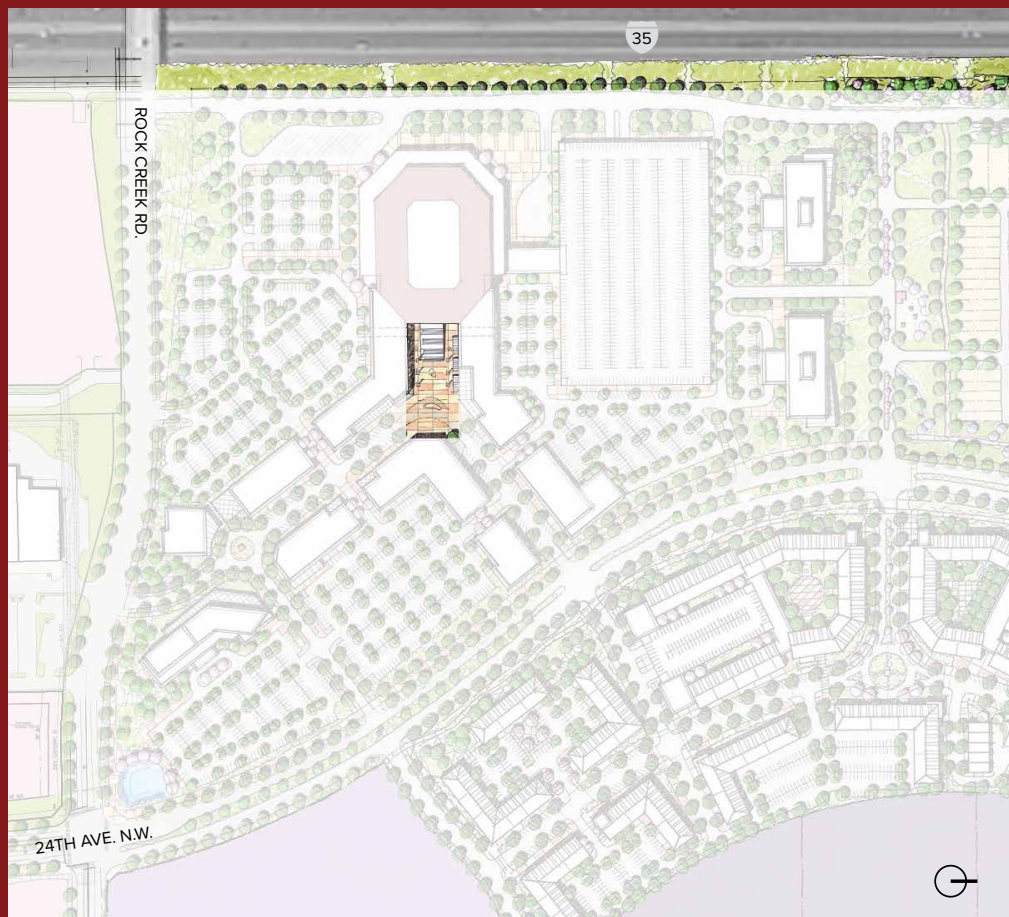
5.5 ACRES

300K SF



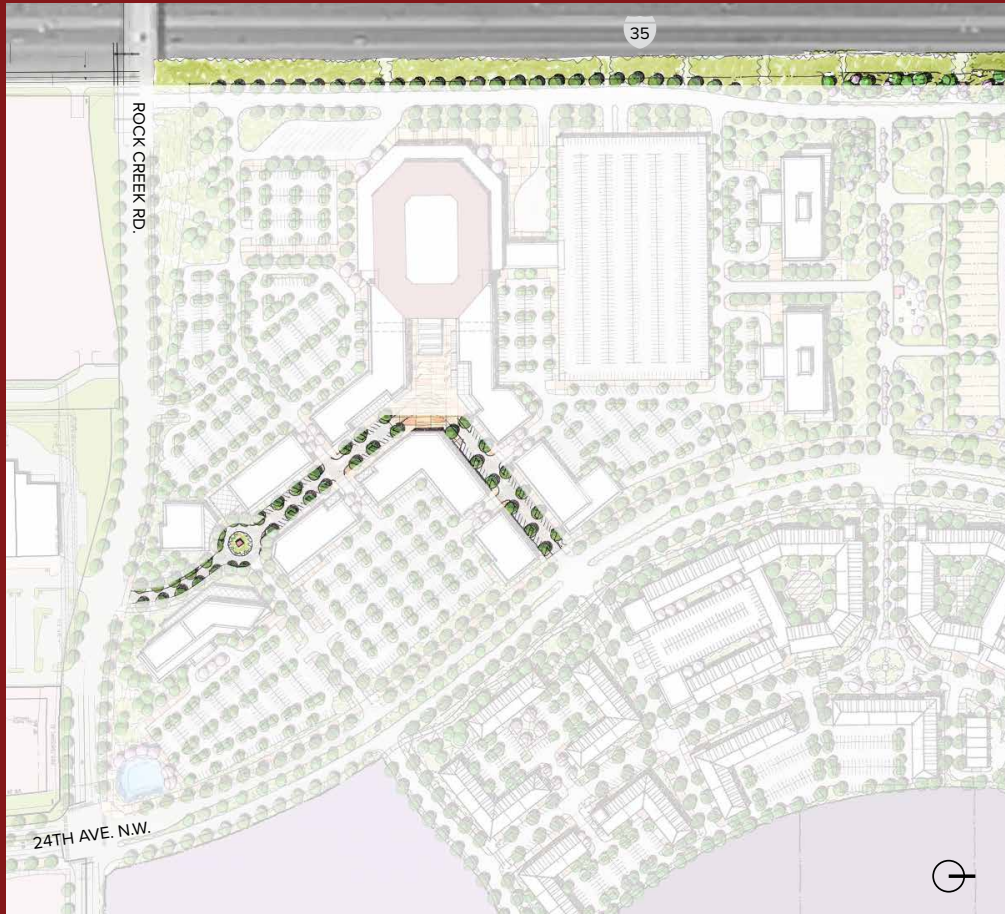


## 4 NORTH: EVENTS PLAZA





## 5 NORTH: FESTIVAL STREET









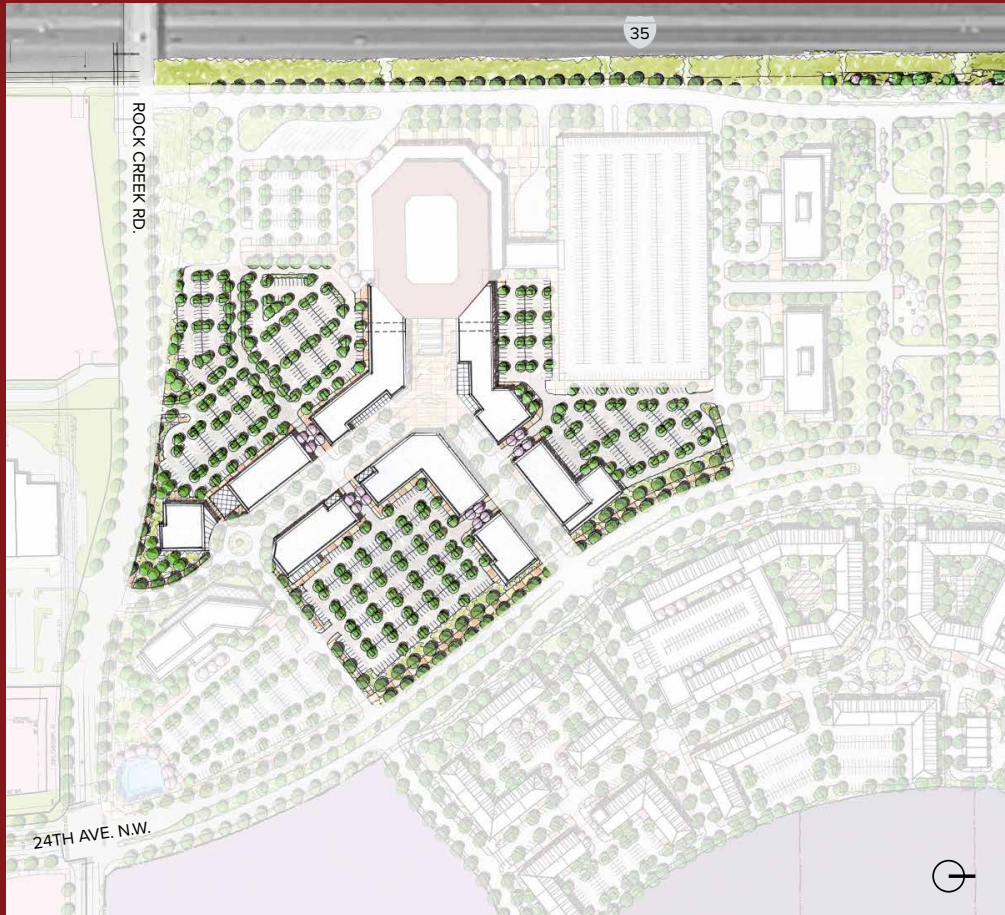








## 6 NORTH: MIXED-USE

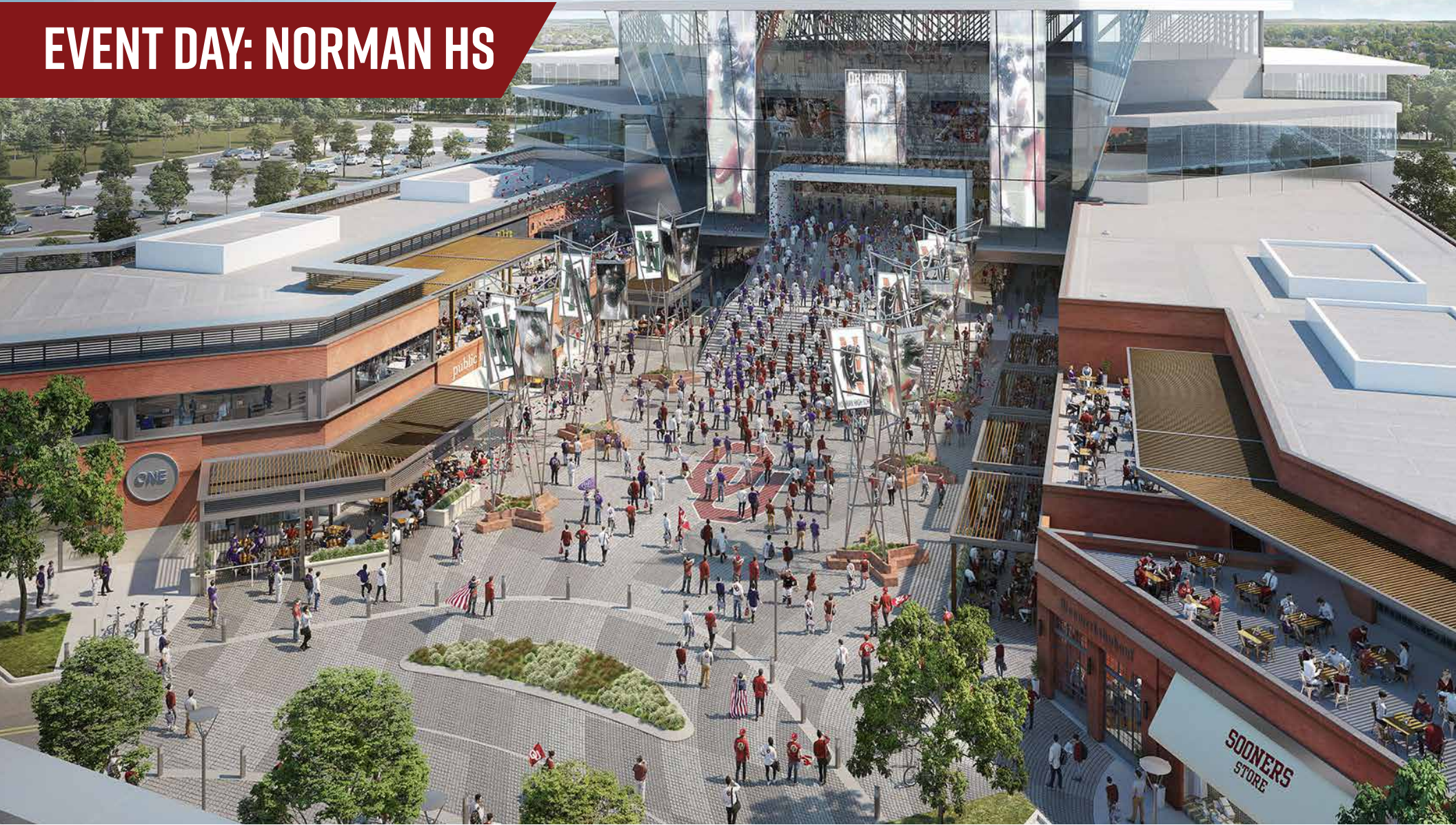


20.1 ACRES  
150K SF ENTERTAINMENT / RESTAURANT  
100K SF UPPER LEVEL OFFICE



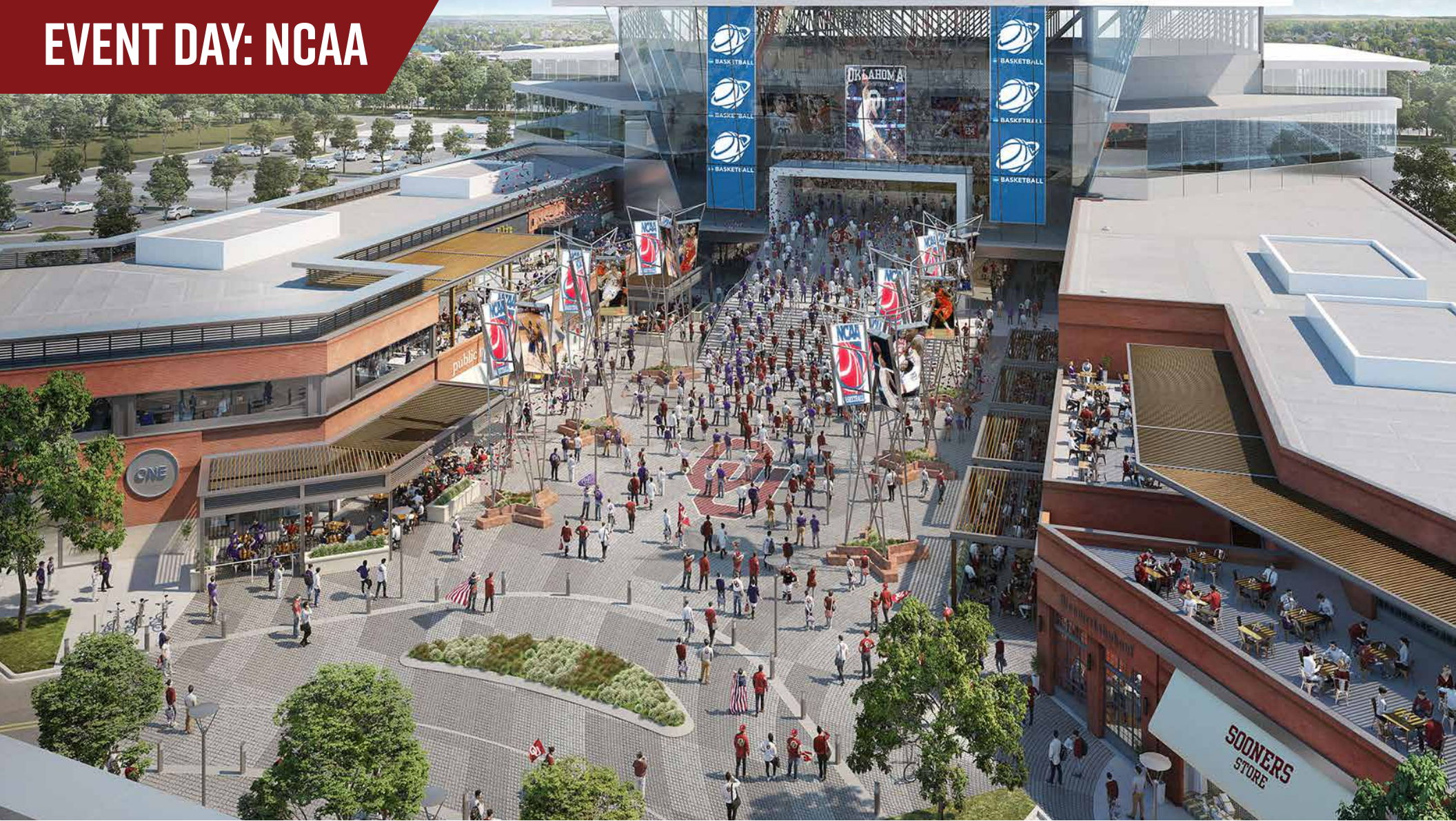


# EVENT DAY: NORMAN HS





# EVENT DAY: NCAA



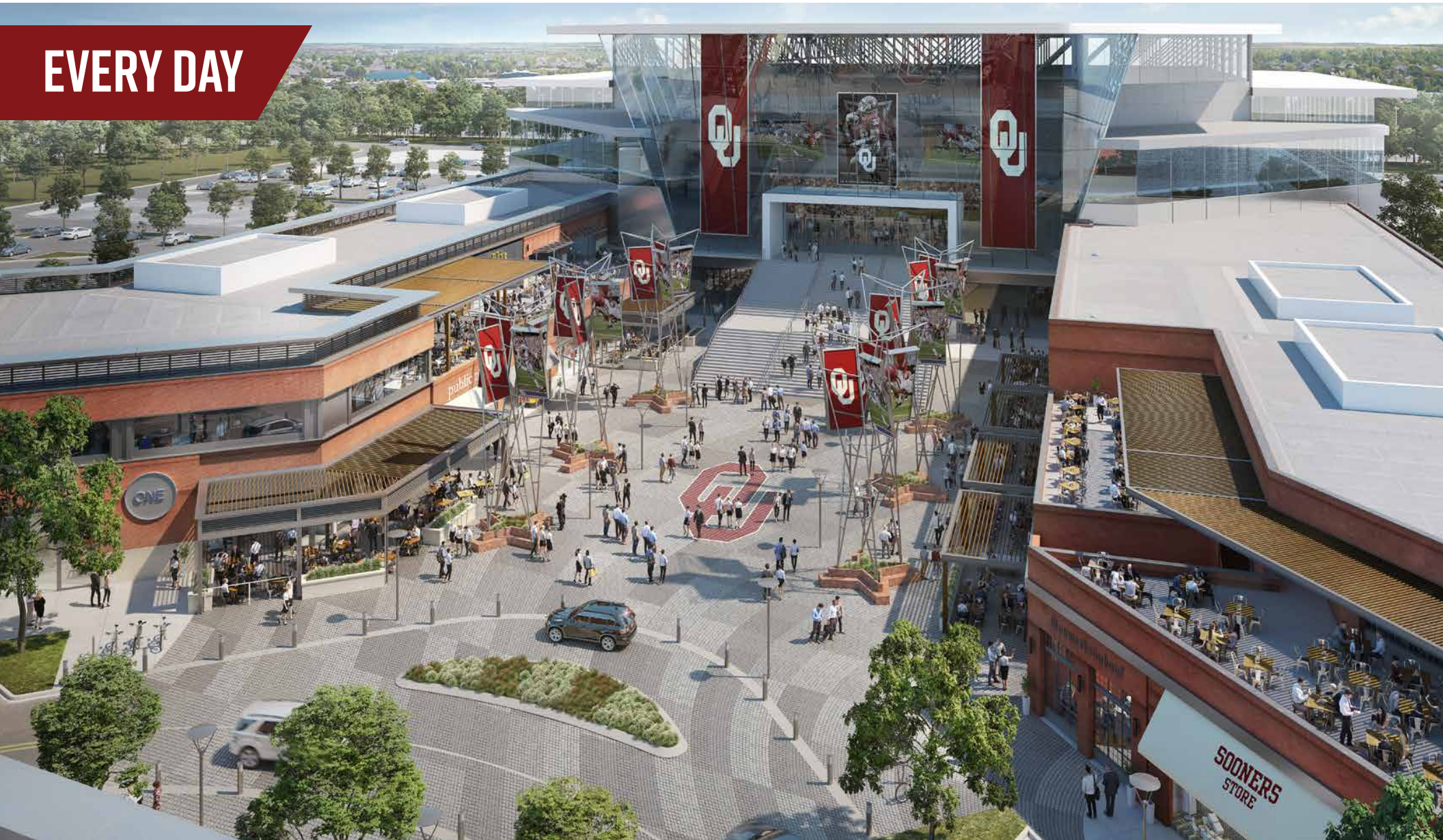


# EVENT DAY: OU





EVERY DAY





# BENEFITS TO THE CITY OF NORMAN:

- 1 / 4,000 new residents
- 2 / Regional-draw entertainment destination
- 3 / 1 New 250-room hotel
- 4 / 15 acres of new parks and open space
- 5 / New employment opportunities
- 6 / Bike and pedestrian trails connected to the city
- 7 / Walkable streetscape environment
- 8 / Flexible expo center
- 9 / Interchange enhancements to improve traffic
- 10 / Abundance of new dining options





**BOOMER SOONER**